

## INSTALLATION / WARRANTY INSTRUCTIONS

PRODUCT BRAND: Pierlite

PRODUCT NAME: Streamline Academy

PRODUCT CODE: STA200LS2D4, STA200LS4D4, STA200LS5D4

Issue Date: 29 Aug. 2023

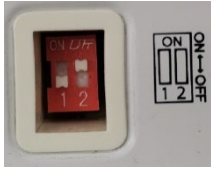
Please read these installation instructions carefully before installing or maintaining this equipment. The product is designed for installation and maintenance in accordance with relevant Australian and New Zealand standards (AS/NZ3000), by an authorized and licensed electrician. The installation instructions were correct at the time of print. To reflect changes in technology and Australian and New Zealand standards; Pierlite reserves the right to amend the instructions without notice. Updated guidelines can be found on relevant brand web site.



### 1. PRODUCT SPECIFICATION:

	STA200LS2D4	STA200LS4D4	STA200LS5D4
Type of Protection	Class I		
Body Material	Steel body with PMMA diffuser		
Finish	Powder coated (RAL9016)		
Circuit Wattage	Please refer to next table		
Nominal Voltage	220-240Vac		
CCT	4000K		
Line Current	Please refer to next table		
Nominal Freq. (Hz)	50/60Hz		
Power factor	>0.90		
Inrush current	<15.8A/288us	<15.8A/288us	<21.6A/346us
Leakage current	<0.7mA	<0.7mA	<0.7mA
Rated operating ambient temperature	40 Degree Celsius		
LED lifetime (L90) @ 40 °C	54,000 hours		
Lumen output (lm)	please refer to next table		
IP Rating	IP20 for interior use only		
Suitable for direct mounting on flammable surfaces	YES		
Dimmable	Yes (Dali Driver)		
Installation orientation	Surface mounted		
Installation type	Fixed		
Designed application	Interior commercial, school (Interior)		
Electrical connection	PA16 Terminal Block		
Dimensions	665mm x 205 mm x 54mm	1265mm x 205mm x 54mm	1565mm x 205mm x 54mm
Net Weight of luminaire	2.4kg	4.2kg	5.3kg
Warranty years	5 Years		

The product is power selected. Factory settings could be altered accordingly by adjusting the DIP switches on the driver.



	ON	DIP Switch 1	ON	System Wattage (W)	Driver Settings (mA)
	OFF	DIP Switch 2	OFF	16	500
	OFF	OFF	ON	18	600
	ON	OFF	OFF	22	700
	ON	ON	OFF	25	800
	OFF	ON	ON		
	ON	ON	ON		
	OFF	ON	ON		

STA200LS2D4

	ON	DIP Switch 1	ON	System Wattage (W)	Driver Settings (mA)
	OFF	DIP Switch 2	OFF	25	500
	OFF	OFF	ON	30	600
	ON	OFF	OFF	36	700
	ON	ON	OFF	40	800
	OFF	ON	OFF		
	ON	ON	OFF		
	OFF	ON	ON		

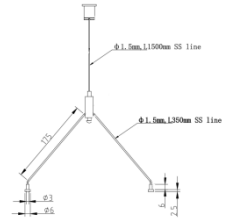
STA200LS4D4

	ON	DIP Switch 1	ON	System Wattage (W)	Driver Settings (mA)
	OFF	DIP Switch 2	OFF	45	900
	OFF	OFF	ON	52	1050
	ON	OFF	OFF	59	1200
	ON	ON	OFF	70	1400
	OFF	ON	OFF		
	ON	ON	OFF		
	OFF	ON	ON		

STA200LS5D4

## 2. Accessories (To be purchased separately)

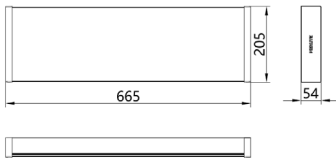
Item Code	Description	QTY Required Per Fitting
WIRESUSP/STA	STREAMLINE ACADEMY WIRE SUSPENSION KIT (2 SETS FOR USE WITH 1 FITTING)	1



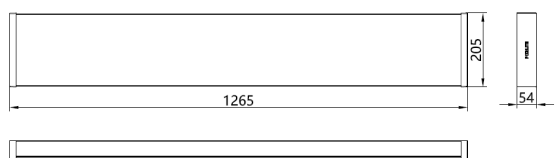
**3. INSTALLATION / GENERAL:** Installation of the product is to be completed by an authorized and licensed electrician, in accordance with these instructions, relevant Australia and New Zealand standards and local regulations (where applicable). Termination of product wiring, together with the installation of the product must be in a manner and orientation that maintains the integrity of the designated IP rating of the product for electronic control equipment (when supplied) DO NOT MEGGER between A and N.

## Line Drawings

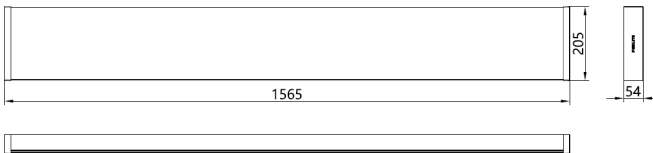
STA200LS2D4



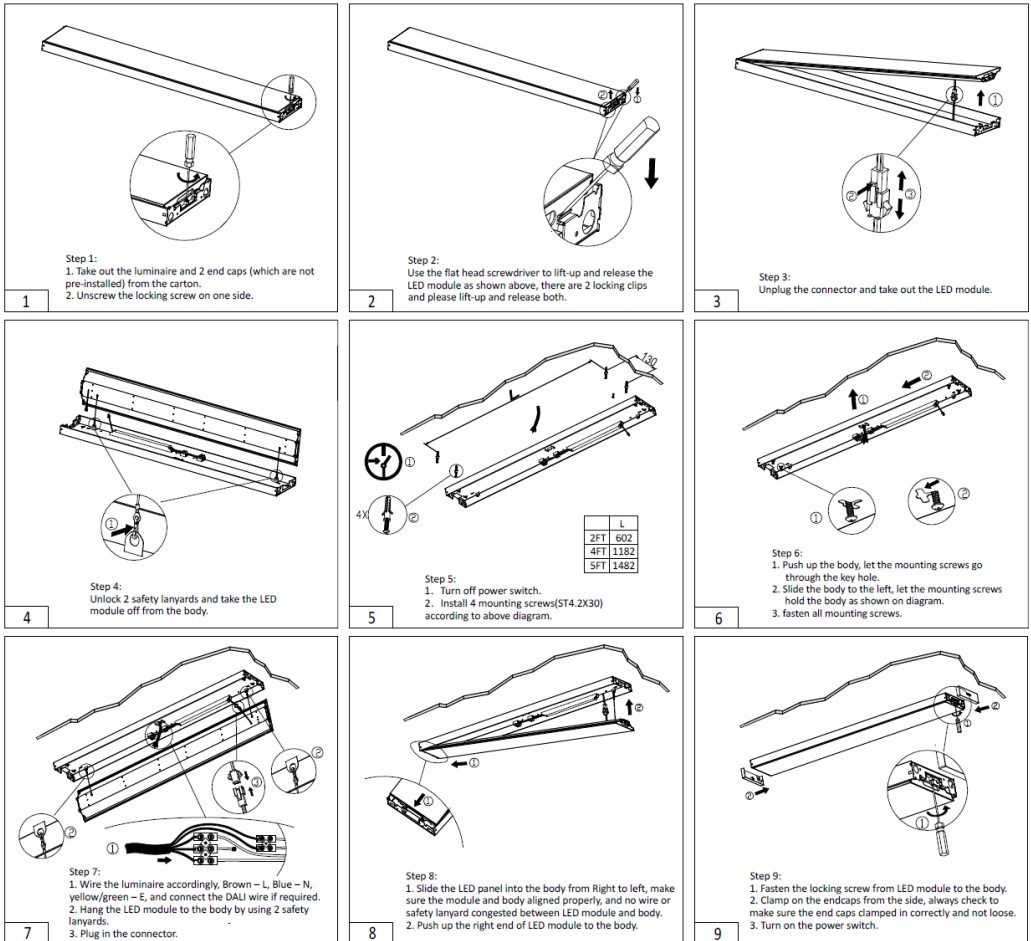
STA200LS4D4



STA200LS5D4



## Installation Instructions:



#### 4. Service & Operation (Emergency Version)

Normal Operation: Maintained Emergency Operation.

Battery: Sealed **Lithium Iron Phosphate (LiFePO4)** rechargeable battery pack. As per AS/NZS 2293, it is required that the battery pack is discharged and recharged at least once every 6 months.

In case of a replacement, same brand and type of battery pack must be used. Allow 24 hours charging time before carrying out any discharge tests.

Charge Duration: 16 Hours

Discharge Duration: M2 = 2 Hours for standard emergency or M4 = 4 hours for rail/heavy industry emergency (Initial Test)

Test Switch: If manual test switch pressed, the fixture will operate from its battery supply.

Please ensure battery plug is connected to the inverter battery terminal.

**WARNING: ALL MAINTENANCE, SUCH AS BATTERY CHANGE ON THIS LUMINAIRE, TO BE PERFORMED BY QUALIFIED PERSONNEL ONLY, DE-ENERGISE ALL SUPPLIES BEFORE MAINTENANCE.**

**WARNING: The light source contained in this luminaire shall only be replaced by the manufacturer or his service agent or a similar qualified person.**

### 5. ELECTRICAL CHARACTERISTICS

SKU to Order	Selectable Wattages by Dip Switches (W)	Emergency Power (W)	Line Current (A)	Power Factor	Factory Default Setting
STA200LS2D4	16	/	0.07	0.91	
	18	/	0.08	0.93	Yes
	22	/	0.09	0.94	
	25	/	0.10	0.96	
STA200LS4D4	25	/	0.10	0.95	
	30	/	0.13	0.96	
	36	/	0.15	0.97	Yes
	40	/	0.16	0.98	
STA200LS5D4	45	/	0.19	0.95	Yes
	52	/	0.22	0.96	
	59	/	0.25	0.97	
	70	/	0.29	0.97	

### 6. LUMEN SELECT (contractor selectable output)

Pierlite's lumen select products allows all licensed electricians to purchase one luminaire that can be set as multiple fixed wattages/ fixed lumen outputs. By offering this capability within one fitting it provides the following benefits

- One fitting multiple fixed outputs
- Less stocked items
- One fitting on the shelf or in the van
- Variable onsite options
- Easy to change settings
- IES files available for all available for wattages shown in the below table
- No control system or software required to change fixed output

#### STA200LS2D4

System Wattage(W)	Driver settings(mA)	4000K (lm)
16W	500	1600
18W	600	1800
22W	700	2200
25W	800	2500


#### STA200LS4D4

System Wattage(W)	Driver settings(mA)	4000K (lm)
25W	500	2600
30W	600	3100
36W	700	3600
40W	800	4000

STA200LS5D4

System Wattung(W)	Driver settings(mA)	4000K (lm)
45W	900	4500
52W	1050	5200
59W	1200	5900
70W	1400	6800

**7. IMPORTANT** - the product must be maintained and operated in accordance with the manufacturer's instructions, failure to do so may damage the product and services. It is strongly recommended that this important note be communicated to the owner and/or operator of the installation at the time of site commissioning. Good practice does not recommend the 24/7 use of products without the application of suitable switch cycle intervals. Furthermore, with the omission of nominated survival curves and/or recommended operating hours, product design expectations provide for a continual daily usage of 6 hours for residential applications and a continual daily usage of 12 hours for commercial and industrial applications. All products must be thoroughly cleaned on a regular basis at intervals that reflect in the installation environment, ensuring the optical performance, together with the electrical, mechanical, and structural integrity as designed, is maintained throughout the service life of the product.

**8. APPROVALS:** The RCM marking of this product applies to AS/NZS CISPR15 (EMC) "Limits and methods of measurement of radio disturbance characteristics of electrical lighting and similar equipment".  
 This product is designed to conform to AS/NZS60598 "Luminaires, general requirements and tests".

**9. STORAGE:** Prior to installation products are to be stored in cool and dry conditions.

**10. APPLICATION:** The installation application and orientation of the product is designed in accordance with the nominated product IP rating, class designation and these installation installations. Installation environments outside these conditions are not recommended.

**11. MAINTENANCE:**

**(a)** The supply must be isolated before opening or accessing the luminaire. Product maintenance is IMPORTANT and is critical to the products designed performance. The product is to be maintained in accordance with the manufacturer's instructions. For the latest product maintenance guides please go to relevant brand web site. Pierlite is not responsible for any product not maintained in accordance with the recommended procedure or intervals.

**(b) Lamps (where provided):** The product is designed with the supplied (LEDs) / LAMP/s and it is strongly recommended that any LAMP / (LEDs) changes (if any) be made in accordance with the type, colour and brand supplied. For recommended LAMP / LED maintenance or operating guides (inclusive of recommended product switch cycles and mandatory run-in procedures for HID and Fluorescent lamps when used with dimming circuits), Pierlite recommends the application of the lamp manufacturer's operating guidelines, which can be found on manufacturer's website. Pierlite is not responsible for the product performance of alternative lamp/s used. As a member of FluroCycle, we encourage recycling of lamps and components.

**(c) Battery (where provided):** The battery is designed with a rated average battery design life in standby mode and is supported with a standard warranty (refer to product specifications for details); conditional of the product being maintained and operated in accordance with the manufacturer's guidelines and tested in accordance with AS/NZS2293. For guidelines see product installation instructions or visit the relevant brand web site.

**(d) For products supplied with glass visors or covers,** do not operate the product with a damaged visor or cover; it is recommended the product be turned off, area surrounding the product vacated, and the damaged glass replaced by a professional installer immediately.

**(e) Cables or cords (where provided):** If any external cable or cord of the X or Y type luminaire is damaged, it shall be replaced by a qualified person or manufacturers service agent.

For Z type attachments to luminaire, cord cannot be replaced if damaged, the luminaire shall be removed from service.

Flex cord types

- X: Specially prepared flexible cable or cord, may also include a part of the luminaire and only available from manufacturer.
- Y: Attachment may be used with either an ordinary or special flexible cable/cord.
- Z: Attachment of cable/cord that cannot be replaced without damage to luminaire

**12. WARRANTY INSTRUCTIONS:** For purpose of warranty claims (if any) the following instructions apply:

**Warranty period** - The above components are provided with a warranty (refer to product specifications for details) against manufacturing defects or failure to perform to specifications for products installed by an authorised installer in accordance with the

manufacturer's installation instructions and which have not been subject to incorrect operation or maintenance, unauthorised modification or damage arising from any intervening cause.

**Warranty reference** - The warranty reference date commences from the date of purchase.

**Warranty point of contact** – Pierlite, 96 Gow Street Padstow NSW 2211, phone T 1300 799 300 – Pierlite After Sales Support.

**Warranty claim procedure** – For the purpose of making a claim the customer must:

1. Contact the "point of contact" above and upon provision of proof of purchase the customer will receive a goods return advice (GRA) number.
2. At the customer's expense, collect and return the goods to the "point of contact" with the issued GRA number.
3. Upon receipt of the goods, Pierlite will review the claim and if found to be accepted, Pierlite will return a replacement product to the customer to install at the customer's expense. Alternatively, if the claim is rejected, the customer may request the return of the goods at their expense.

**Consumer Contracts** - The benefits to the customer given by the Pierlite warranty are in addition to other rights and remedies of the customer if the goods are the subject of a Consumer Contract under the Australian and New Zealand Consumer Law. In that event the following statement is required to be brought to the Consumer's attention: - *Our goods come with guarantees that cannot be excluded under the Australian and New Zealand Consumer Law. You are entitled to a replacement or refund for a major failure and for compensation for any other reasonably foreseeable loss or damage. You are also entitled to have the goods repaired or replaced if the goods fail to be of acceptable quality and the failure does not amount to a major failure.*

**Limitation of Liability** – if the goods are not purchased by the customer under a Consumer Contract within the Australian and New Zealand Consumer Law then but not otherwise;- (a) the Company is not liable in tort for any loss or damage suffered by the customer or by any third party; and (b) in no circumstances is Pierlite liable to the customer or to any third party for any loss of profits, loss of anticipated savings, economic loss or interruption of business or for any indirect or consequential loss (Consequential Loss).

**Terms of Sale** – these warranty provisions are in substitution for any inconsistent provisions in the Pierlite Terms and Conditions of Sale in so far as they apply to the warranty components.